

SUPPLEMENT to the Solomon Islands GazetteFriday 12th December, 2013

S.I. No.55

[Legal Notice No. 92]

TOBACCO CONTROL ACT 2010

(No. 2 of 2010)

TOBACCO CONTROL REGULATIONS 2013**Arrangement of Regulations****PART 1 – PRELIMINARY**

1. Citation and commencement
2. Interpretation

PART 2 – LABELING OF TOBACCO PRODUCT CONTAINERS**Division 1 How health warnings must be displayed on tobacco products**

3. Display of health warnings, etc
4. Manner of display and format for health warnings
5. Information on toxic constituents to be displayed on packages containing tobacco
6. Format of information on toxic constituents
7. Position of information on toxic constituents
8. Health warnings and information not to be obscured or damaged

Division 2 Rotation of health warnings

9. Warnings to appear in rotation – all tobacco products
10. Specified periods for display of combination for cigarettes and loose or pipe tobacco

**Division 3 Other matters relating to labeling
of tobacco products**

- 11. Use of adhesive labels
- 12. Misleading terms not to be used

Division 4 Display of packages in retail environments

- 13. Packages to show front principal display area where offered for sale

Division 5 Controls on the content of tobacco products

- 14. Regulating additives, as a product content, in tobacco products
- 15. Minister may prohibit certain tobacco products

**PART 3 – TESTING OF TOXIC CONSTITUENTS
AND REPORTING**

- 16. Conduct of tests for toxic constituents in domestically manufactured and imported tobacco products
- 17. Reports on toxic constituents
- 18. Other reports
- 19. Certification of reports and penalties for false or misleading information

PART 4 – SMOKE-FREE AREAS

- 20. Restrictions on smoking near smoke-free areas
- 21. No-smoking signs

SCHEDULES –

- Schedule 1
- Schedule 2
- Schedule 3
- Schedule 4

TOBACCO CONTROL ACT 2010

(No. 2 of 2010)

TOBACCO CONTROL REGULATIONS 2013

IN the exercise of the powers conferred upon me by section 41 of the Tobacco Control Act 2010, I make these Regulations –

PART 1 – PRELIMINARY

1. These Regulations may be cited as the Tobacco Control Regulations 2013 and commence on the date of its publication in the *Gazette*. Citation and commencement

2. In these Regulations, unless the context otherwise requires –

Interpretation

“Act” means the *Tobacco Control Act 2010*;

“additive” means a substance that forms part of a tobacco product that is not cured tobacco leaf; and includes –

- (a) a substance forming part of the product that has been derived or refined from tobacco leaf (whether cured or not); or
- (b) any substance that is introduced into a product during processing, manufacturing, or packaging including, as appropriate, those contained in the paper, filter, portion pouch or similar part of the tobacco product;

“carton” means a package comprising two or more tobacco packages within –

- (a) a container; or
- (b) a wrapper that obscures or tend to obscure any writing on any of those packages that would be legible if it were completely transparent;

“cigar” means a tobacco product comprising a roll of tobacco leaf or cut tobacco, enclosed in tobacco leaf or the leaf of another plant;

“cigarette” means a tobacco product comprising a roll of cut tobacco, enclosed in paper;

“cigarette pack” means a package containing cigarettes;

“constituents” means –

- (a) for tobacco products intended for smoking, the chemicals found in the product itself or in the smoke emitted from the product; and
- (b) for smokeless tobacco products, the chemicals inherent in the tobacco itself released by particles during the process of consumption;

“declared area” means an area declared under section 19(6) of the Act;

“displayed” in relation to any package, face, or flap, means displayed on the outside of the package, face or flap;

“emissions” means substances that are released when the tobacco product is used as intended, such as –

- (a) for cigarettes or other combusted products emissions, the substances found in smoke;
- (b) for smokeless tobacco products for oral use, the substances released during the process of chewing or sucking; or
- (c) for nasal use, the substances released by particles during the process of snuffing;

“enclosed” means covered by a roof or roof-like structure or one or more walls or sides of any material, whether permanent or semi-permanent;

“explanatory message” means a message set out in Schedules 1 or 2;

“flip-top pack” means a tobacco package of the kind commonly called a flip-top pack, a hinge-top pack, or a hinge-lid box;

“graphic health warnings” means pictures or pictograms printed in full color of conditions that are caused by tobacco use and exposure to second hand (passive) smoking that are affixed to the package of cigarettes products;

“health warning” has the same meaning as “warning” under the Act;

“information on toxic constituents” means the information required by regulation 5;

“means of public transport” means any form or mode of transportation that carries passengers for hire or reward, whether locally, between places within Solomon Islands, or Solomon Islands and another place outside it;

“no-smoking sign” means a sign or notice prepared and approved in accordance with the requirements of these Regulations stating that smoking any tobacco product is prohibited within the smoke-free area the sign or notice is displayed, and includes the internationally recognized ‘no-smoking symbol’ comprising a graphical representation of a lit cigarette with a diagonal line through the cigarette;

“person responsible” means the owner or person who has control or responsibility over the premises or means of public transport or employer, and any agent or assignee of such person;

“premises” means any permanent building used for commercial purposes, but excludes betel nut stands;

“principal display surface” means –

- (a) for a package that has at least two equal sized sides or surfaces, other than the top and bottom, that may be displayed or visible under normal or customary conditions of sale or use, the area of each of two of those sides or surfaces, including the sides of any lid or cover if those sides are part of the package;
- (b) for a package that has sides of more than one size, the area of each half of the total area of its largest side;
- (c) for a package that has a lid or flap that is part of the package displayed or visible under the normal or customary conditions of sale or use, the area of each half of the total area of the top surface of the lid or flap;
and

- (d) for a package that does not have a particular side or surface that is predominantly displayed or visible under normal or customary conditions, any two portions that each occupy 40 percent of the total surface area of the package or carton and that can be displayed or visible under normal or customary conditions of sale or use, excluding, where applicable, the top surface of any lid, but including the side of the lid if the side is a part of the side of the package or carton;

“pouch pack” means a package made, from flexible material in the form of a rectangular pocket with a flap covering the opening;

“public place”, pursuant to section 17 of the *Interpretations and General Provisions Act* (Cap. 85), means any fixed or mobile place to which members of the general public or segments of the general public ordinarily have access by express or implied invitation;

“tobacco product” has the same meaning under the Act, and for greater certainty includes *lekona* and *savusavu* however so described;

“school” means, for the purposes of these Regulations, a primary or secondary education institution;

“side” means, with respect to a package, the surfaces of the pack other than faces where health warnings are required to be displayed by these Regulations;

“smoke-free area” means a workplace, school, hospital, public transport, or a declared area;

“smokeless tobacco” means tobacco products that are manufactured to be chewed, sucked or snuffed;

“soft pack” means a package of the kind commonly called a soft package or a soft cup;

“wrapper” means a wrapping containing a package which has a non-removable adhesive label or sticker securely attached to it.

PART 2 – LABELING OF TOBACCO PRODUCT CONTAINERS

Division 1 How health warnings must be displayed on tobacco products

3. (1) For the purposes of section 9 of the Act, every package that is sold or offered for sale in Solomon Islands shall, except as otherwise specified in these Regulations, display on such package the following –

Display of health warnings, etc

- (a) a health warnings in English and Solomon Islands Pidgin in the layout specified in Schedule 4 along with the corresponding explanatory message and graphic health warning specified in Schedule 1, 2, and 3;
 - (b) information on toxic constituents;
 - (c) carry the statement “Sales only allowed in Solomon Islands”.
- (2) Pursuant to subregulation (1), a package in Solomon Islands shall display the applicable explanatory messages required by regulation 3(1) and in accordance with Schedules 1, 2, and 3.
- (3) A person who contravenes subregulation (1) or (2) commits an offence under the Act and is liable to the penalties provided therein.

4. (1) Pursuant to regulation 3, a manufacturer or importer shall ensure that health warnings, including graphic health warnings, shall be displayed on the package in the position and manner specified in this regulation and under Schedule 4 to these Regulations.

Manner of display and format for health warnings

- (2) On each package, graphic health warnings and health warnings together shall—
- (a) occupy 70 percent of the principal display surface on the front;
 - (b) occupy 30 percent of the principal display surface on the back;
 - (c) be positioned parallel to the top edge as much as possible while satisfying the requirements of paragraph (d);
 - (d) be displayed on the principal display surface in a manner that ensures that none of the words of the warning or graphics will be severed when the package is open;
 - (e) contain the information, wording or graphics specified in Schedules 1, 2, and 3;
 - (f) be rotated so that a range of warnings are displayed on all tobacco brands and brand variants;
 - (g) be as closely as possible reproduced in the colours, style and format specified in Schedules 1, 2, 3 and 4.
- (3) The health warnings and explanatory messages shall —
- (a) be clear, legible and conspicuous;
 - (b) for the front principal display area — be printed in white font on a black rectangular background;
 - (c) for the back principal display area — health warnings be printed in white font on a red rectangular background and for explanatory messages be printed in white font on a rectangular black background;
 - (d) be of the same point size throughout the warning;
 - (e) be of normal weight;
 - (f) be printed in the typeface known as Aria;
 - (g) be of such a size that the text fills, as nearly as possible, the background on which it is displayed;
 - (h) not be obscured by a flap, lid, or other part of the package; and
 - (i) shall be printed so as not to be easily removable without significant destruction of the package.

- (4) No words or material may appear within the borders around the health warnings, graphic health warnings, and information on toxic constituents other than that specified in this regulation.
- (5) A company logo or brand name may appear once only on the front principal display area of the package.
- (6) The inscription of company promotional statement, hotline, advertisement, shall not appear in any package, and will be subject to section 4 of the Act.
- (7) A person who contravenes this regulation commits an offence under the Act and is liable to the penalties provided therein.

5. (1) For the purposes of section 9 of the Act, any package being offered for sale in Solomon Islands shall display information on toxic constituents as specified in Schedules 1, 2, 3, and 4.

Information on toxic constituents to be displayed on packages containing tobacco

- (2) A person who contravenes subregulation (1) commits an offence under the Act and is liable to the penalties provided therein.

6. (1) The text of information on toxic constituents required to be displayed on packages in accordance with regulation 5, shall –

Format of information on toxic constituents

- (a) be clear, legible and conspicuous;
- (b) be printed in black font on a rectangular yellow background;
- (c) be printed in the same point size throughout the statement (except for the word 'WARNING', which must be of a font size at least twice as large as the rest of the text);
- (d) be of normal weight;
- (e) be printed in the typeface known as Arial;

- (f) be of such a size that the text fills, as nearly as possible, the background on which it is displayed;
- (g) be printed so as not to be easily removable without significant destruction of the package;
- (h) where regulation 7 requires it to be displayed on a side of a package, oriented so that its lines of type are parallel to the longest edges of the side;

(2) Information on toxic constituents must be displayed using the layout under Schedule 4 to these Regulations.

Position of
information on
toxic con-
stituents

7. (1) Pursuant to regulation 5, the information on toxic constituents required to be displayed on packages shall be displayed on one side of the package in a manner that does not interfere with the display of health warnings and graphic health warnings.

(2) The information on toxic constituents shall be displayed on packets of manufactured cigarettes so that it occupies an entire side of the packet.

(3) If one side of the package is larger than the other side, the information on toxic constituents shall be displayed on the larger side.

(4) Where the package has a flip-top, the background of the information on toxic constituents does not include the part that is part of the flip-top.

(5) If two or more sides of a package of equal area are larger than the other sides, the information on toxic constituents shall be displayed on one of those larger sides.

(6) For any form of package that is not a cigarette pack or carton, the background of the information on toxic constituents shall be at least nine percent of the total surface area of the pack.

8. If an explanatory message, corresponding explanatory message, corresponding information on constituents or corresponding graphic health warning required by these Regulations to be printed on a package is likely to be obscured or obliterated by a wrapper on the package, the message or graphic shall be printed on both the wrapper and the package.

Health warnings and information not to be obscured or damaged

Division 2 – Rotation of health warnings

9. (1) A manufacturer or importer of tobacco products shall, in relation to the specified periods -

Warnings to appear in rotation - all tobacco products

- (a) print (or ensure that they are printed) on its packages the relevant combinations specified in Schedule 1, 2, 3 and 4;
- (b) ensure that during the specified periods, the combinations are printed on an equal number of packages as nearly as possible of each different brand and brand variant of tobacco products.

(2) For the purposes of subregulation (1), tobacco products are not of the same kind if, and only if, the tobacco products -

- (a) are sold under different brand names; or
- (b) are sold under the same brand name, but differ in one or more of the following ways –
 - (i) containing or not containing menthol;
 - (ii) being otherwise different flavoured;
 - (iii) producing different quantities of tar;
 - (iv) allegedly differing in mildness;
 - (v) having or not having filter tips or cork tips;
 - (vi) being sold in packages containing different numbers of pieces;
 - (vii) being of different length or mass.

(3) Any specific health warning in English and Solomon Islands Pidgin shall be properly spelled out as described in Schedules 1 and 2.

(4) A person who contravenes subregulation (1) or (3) commits an offence under the Act and is liable to the penalties provided therein.

Specified periods for display of combination for cigarettes and loose or pipe tobacco

10. (1) This regulation applies to combinations of explanatory messages, corresponding explanatory messages, corresponding graphic health warnings and corresponding information on toxic constituents for the following retail packaging –

- (a) packages containing cigarettes and cigars; and
- (b) packages containing loose or pipe tobacco

(2) Combinations in Schedule 1 are only combinations to be printed by manufacturers or importers on packages intended to be supplied during the first eight months of a year (an even-numbered year) commencing on:

- (a) 1 January 2014;
- (b) 1 January each second subsequent year.

(3) Combinations in Schedule 2 are the only combinations to be printed by manufacturers or importers on packages intended to be supplied during the first 8 months of a year (an odd-numbered year) commencing on:

- (a) 1 January 2015;
- (b) 1 January in each second subsequent year.

(4) In the period of 4 months beginning on 1 September in any odd-numbered year or any even-numbered year, manufacturers or importers may print any combination required by Schedules 1 or 2 for packages intended to be supplied during this period.

**Division 3 – Other matters relating to labeling of
tobacco products**

11. (1) For the purposes section 9 of the Act, the health warning, graphic health warning, and information on toxic constituents as required by these Regulations to be printed or otherwise marked on a package may be printed on an adhesive label that is affixed to the retail container. <sup>Use of adhesi
labels</sup>

(2) An adhesive label under subregulation (1) shall –

- (a) comply with the Act and Regulations in all respects;
- (b) be affixed to the surface of the package on which the health warning, graphic health warning, and information on toxic constituents is required to be printed or marked, but if the package is not a rectangular block in shape may be affixed anywhere on that surface;
- (c) be fastened firmly to the package so as not to be easily removed; and
- (d) in no way distort the health warning, graphic health warning, and information on toxic constituents required to be provided under these Regulations.

(3) A person who contravenes subregulation (1) commits an offence under the Act and is liable to the penalties provided therein.

Misleading
terms not to
be used

12. (1) No package or label shall contain any information or term that is misleading, including the following terms, whether or not part of the brand name,

- (a) "light";
- (b) "lite";
- (c) "ultra light";
- (d) "ultra lite";
- (e) "super light";
- (f) "super lite";
- (g) "mild";
- (h) "ultra mild";
- (i) "extra mild";
- (j) "low tar";
- (k) "reduced tar";
- (l) "low nicotine";
- (m) "reduced nicotine";
- (n) "slim";
- (o) "safe"; or
- (p) similar words or descriptors which may misleadingly promote the product to the public as to the level of tobacco content or toxic constituents in the product.

(2) Pursuant to subregulation (1), no package or label shall contain any graphics associated with, or likely or intended to be associated with, such words or descriptors listed under subregulation (1), and any product package design characteristics, associated with, or likely or intended to be associated with, such descriptors.

(3) Subregulation (1) shall not apply to a health warning or information on a carton.

(4) A person who contravenes subregulation (1) commits an offence under the Act and is liable to the penalties provided therein.

Division 4 – Display of packages in retail environments

Packages to
show front prin-
cipal display
area where
offered for sale

13. (1) A retailer shall display packages so that the front principal display area is the most visible part of the package to the public in places where tobacco products are offered for sale.

(2) A retailer who does not comply with this regulation commits an offence and is liable –

- (a) for an individual –
 - (i) for the first offence, to a fine not exceeding 20,000 penalty units or to imprisonment for a term not exceeding two years; or

(ii) for the second or any subsequent offence, to a fine not exceeding 50,000 penalty units or to imprisonment for a term not exceeding four years; or

(b) for a body corporate –

(i) for the first offence, to a fine not exceeding 500,000 penalty units; or

(iii) for the second or any subsequent offence, to a fine not exceeding 1,000,000 penalty units.

Division 5 – Controls on the content of tobacco products

14. (1) A distributor shall not sell any tobacco product that contains inks or pigments unless the inks or pigments – Regulating additives, as a product content

(a) are used to resemble a cork tip; or

(b) are used to print a brand name of the distributor or other manufacturer once on the tobacco product only.

(2) A printed brand name under subregulation (1)(b) may be in a type no more than 1 centimetre high.

(3) A distributor who does not comply with this regulation commits an offence and is liable –

(a) for an individual –

(i) for the first offence, to a fine not exceeding 20,000 penalty units or to imprisonment for a term not exceeding two years; or

(ii) for the second or any subsequent offence, to a fine not exceeding 50,000 penalty units or to imprisonment for a term not exceeding four years; or

(b) for a body corporate –

(i) for the first offence, to a fine not exceeding 500,000 penalty units; or

(ii) for the second or any subsequent offence, to a fine not exceeding 1,000,000 penalty units.

Minister may
prohibit certain
tobacco
products

15. (1) For the purposes of section 41(n) of the Act, the Minister may make a declaration prohibiting the sale or distribution of a tobacco product if the Minister is satisfied that the tobacco product, or the smoke of the product, has –

- (a) a distinctive fruity, sweet, or confectionery-like character; or
- (b) a spicy or herb-like flavour; or
- (c) any other flavour which, in the opinion of the Minister, is likely to appeal to a child.

(2) Any distributor who distributes a tobacco product declared to be prohibited under this regulation commits an offence and is liable –

- (a) for an individual –
 - (i) for the first offence, to a fine not exceeding 20,000 penalty units or to imprisonment for a term not exceeding two years; or
 - (ii) for the second or any subsequent offence, to a fine not exceeding 50,000 penalty units or to imprisonment for a term not exceeding four years; or
- (b) for a body corporate –
 - (i) for the first offence, to a fine not exceeding 500,000 penalty units; or
 - (ii) for the second or any subsequent offence, to a fine not exceeding 1,000,000 penalty units.

PART 3 – TESTING OF TOXIC CONSTITUENTS AND REPORTING

16. (1) Tar nicotine and carbon monoxide are prescribed toxic constituents for the purposes of sections 16 and 17 of the Act.
- (2) Domestically manufactured and imported cigarettes are a prescribed class of tobacco products for the purposes of testing for, and reporting on, toxic constituents as required by sections 16 and 17 of the Act.
- (3) Domestically manufactured and imported cigarettes shall be tested at least once in each calendar year, in accordance with sections 16 and 17 of the Act, for the purpose of providing a report under section 17(1) of the Act on the levels of toxic constituents in the smoking from each brand and brand variant of domestically manufactured and imported cigarettes.
- (4) Tests for the toxic constituents of brands and brand variants of domestically manufactured and imported cigarettes and the respective quantities of those constituents present in the smoke from combustion of manufactured and imported cigarettes shall be conducted in accordance with the following standard methods published by the International Standards Organization –
- (a) for tar, ISO 4387:1991 (E) mg
(Determination of total and nicotine-free dry particulate matter using a routine analytical smoking machine) or its successor standard;
 - (b) for nicotine, ISO 10315:1991(E) (Cigarettes – Determination of nicotine in smoke condensation - Gas chromatographic method) or its successor standard;
 - (c) for carbon monoxide, ISO 8454:1995(E)
(Cigarettes – Determination of carbon monoxide in the vapour phase of cigarette smoke – NDIR method) or its successor standard;

Conduct of tests for toxic constituents in domestically manufactured and imported tobacco products

- (d) for tar, nicotine, and carbon monoxide, in addition to the applicable standard method specified in paragraph (a), (b) or (c) –
 - (i) ISO 3308:1991(E) (Routine analytical cigarette-smoking machine – Definitions and standard conditions) or its successor standard;
 - (ii) ISO 8243:1991(E) (Cigarettes – Sampling) or its successor standard;
 - (iii) ISO 3402:1991(E) (Tobacco and tobacco products – Atmosphere for conditioning and testing) or its successor standard.

(5) The test for the purpose of sections 16 and 17 of the Act, whether annual or further, shall be conducted in a laboratory accredited in accordance with the International Organization for Standardization (ISO) Standard 17025 (General requirement for the competence of testing and calibration laboratories) or its successor standard and nominated by the Minister.

(6) The Minister may, by Order, designate a laboratory that must be used for tests under the Act and these Regulations.

(7) The distributor of tobacco products shall bear the costs of the tests required under Sections 16 and 17 of the Act.

Reports on
toxic
constituents

17. (1) A manufacturer or importer of any class of tobacco product shall, within 60 days of testing and in any event not later than the 31st day of March the following year, file with the Permanent Secretary the results of any test conducted for the purposes of sections 16 and 17 of the Act.

(2) A report on the tests for toxic constituents undertaken for the purposes of Section 17(a) to (e) of the Act and conducted in accordance with regulation 14 shall be filed with the Minister and Permanent Secretary in the form required by the Permanent Secretary.

(3) A person who contravenes this regulation commits an offence under the Act and is liable to the penalties provided therein.

18. (1) A manufacturer or importer of any class of tobacco product shall, no later than the 31st day of March in each year, file with the Permanent Secretary the reports required by Section 17 of the Act with respect to – Other reports

- (a) the quantity of tobacco products manufactured or imported in Solomon Islands by manufacturers or importers during the previous year;
- (b) the quantity of each brand or brand variant of tobacco product sold in Solomon Islands by manufacturers or importers during the previous year;
- (c) the recommended retail price of each brand or brand variant sold in Solomon Islands by manufacturers or importers during the previous year; and
- (d) the total weight of each additive used in the manufacture of each class of tobacco product sold by manufacturers or importers in Solomon Islands during the previous year.

(2) All reports required under section 17 shall be filed with the Minister in the form required by the Permanent Secretary.

(3) A person who does not submit a required report in accordance with this Part commits an offence under the Act and is liable to the penalties provided therein.

19. (1) For all reports required by the Act or under this Part, the manufacturer or importer must –

- (a) certify that all statements are true and accurate at the time of the report; and
- (b) inform the Minister or Permanent Secretary of any inaccuracies in any report provided in a timely manner.

Certification
of reports and
penalties for
false or mis-
leading infor-
mation

- (2) A manufacturer or importer who knowingly provides false or misleading information in any report required by the Act or this Part commits an offence under the Act and is liable to the penalties provided therein.

PART 4 – SMOKE-FREE AREAS

Restriction
on smoking
near smoke-free
areas

20. (1) Subject to Part 4 of the Act, the person responsible for any declared smoke-free area may designate outdoor smoking areas.

(2) The person responsible for any smoke-free area –

(a) shall take reasonable steps to ensure that a person who smokes in violation of the provisions of the Act or this regulation –

(i) is requested to stop smoking; or

(ii) is requested to leave or is refused service if the person continues to smoke after being requested to stop smoking; and

(b) may seek the assistance of a police officer to remove the person.

(3) If the offender is an employee, the employer may take necessary disciplinary measures against the employee.

(4) A person responsible under subregulation (3) who does not take reasonable steps commits an offence under the Act and is liable to the penalties provided therein.

(5) No person shall retaliate against any person who asserts his or her right to a smoke-free environment or who reports a violation of the Act or Regulation.

(6) A person who contravenes subregulation (5) commits an offence under the Act and is liable to the penalties provided therein.

21. (1) The person responsible for any smoke-free area shall ensure that –
- No-smoking signs
- (a) a no-smoking sign is displayed at each entrance to, and other prominent places within, the smoke-free area; and
 - (b) no ashtrays are provided, supplied or available in any enclosed area which is not designated as a smoking area.
- (2) A no-smoking sign shall –
- (a) comply with any template design and appropriate information on the signage;
 - (b) excluding signs in vehicles, be the following specifications –
 - (i) the sign shall be at least 29.7cm by 42.0cm;
 - (ii) the sign shall state, in Solomon Islands Pidgin or English, that smoking is not permitted;
 - (iii) the words on the sign be black in colour, on a white background;
 - (iv) the words on the sign shall be large, clear and legible;
 - (v) the words on the sign shall be in sentence-case, Universal medium condensed Roman typeface.
- (3) A no-smoking sign shall be displayed within each smoke-free area so that the signage is clearly visible to all people within that area.
- (4) The owner or person-in-charge of any place that is not a smoke-free area shall display a no-smoking sign within the place.

(5) The person responsible for any place other than a smoke-free area shall ensure that a no-smoking sign is displayed and ashtrays are not provided or made available for use in smoke-free areas of the place.

(6) A no-smoking sign shall be displayed within areas of any work place.

(7) Every employer shall ensure that a no-smoking sign is displayed prominently in every work vehicle.

(8) No-smoking signs shall be displayed inside all public service vehicles in a position that is visible to the passengers in the vehicle.

(9) Any person who contravenes this regulation commits an offence under the Act is liable to the penalties provided therein.

SCHEDULE 1

(regulations 2, 3, 4, 5, 9 and 10)

**Warning messages, corresponding graphic health warnings,
corresponding explanatory messages and corresponding information
on constituents – retail packaging of cigarettes and loose
or pipe tobacco (first set of health warnings)**

1. Smoking Kills

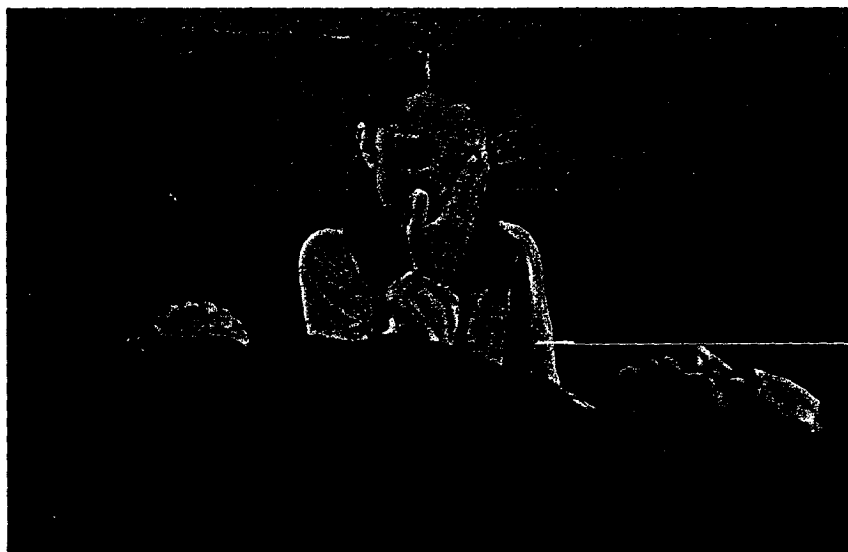
(a) The warning message in English is:

SMOKING KILLS

(b) The warning message in Solomon Islands Pidgin is:

SMOKA SAVE KILLIM MAN FINIS

(c) The graphic for the front outer surface is:



(d) The information on constituents is:

Smoke from this tobacco product contains benzene, a cancer-causing substance.

2. Smoking causes gangrene

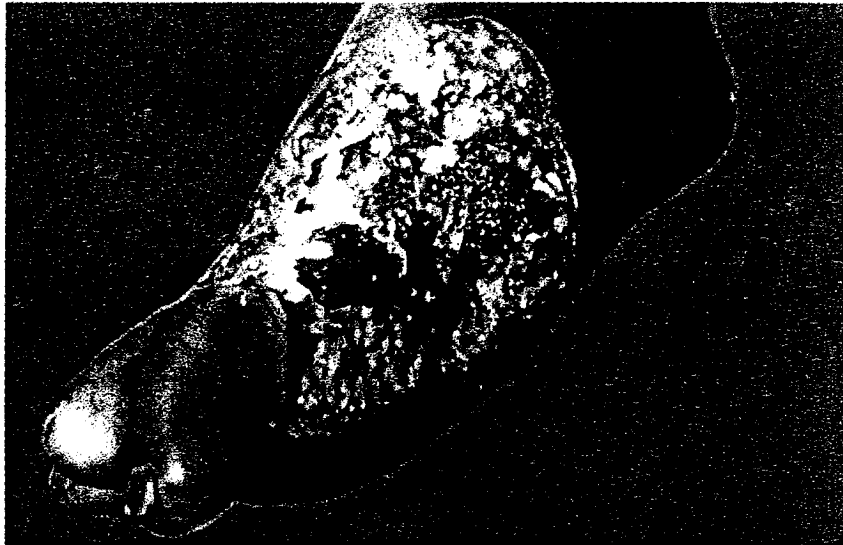
(a) The warning message in English is:

SMOKING CAUSES GANGRENE:

(b) The warning message in Solomon Islands Pidgin is:

SMOKA SAVE MAKEM LEK AND HAN ROTEN

(c) The graphic for the front outer surface is:



(d) The information on constituents is:

Tobacco smoke contains a poisonous mix of chemicals.

3. Smoking can harm your child

(a) The warning message in English is:

SMOKING CAN HARM YOUR CHILD

(b) The warning message in Solomon Islands Pidgin is:

SMOKA SAVE SPOELEM HELT BLO PIKININI BLO IU

(c) The graphic for the front outer surface is:



(d) The information on constituents is:

The poisonous chemicals from tobacco smoke can be found in your breath, urine and blood when you smoke.

4. Smoking burns away your family's money

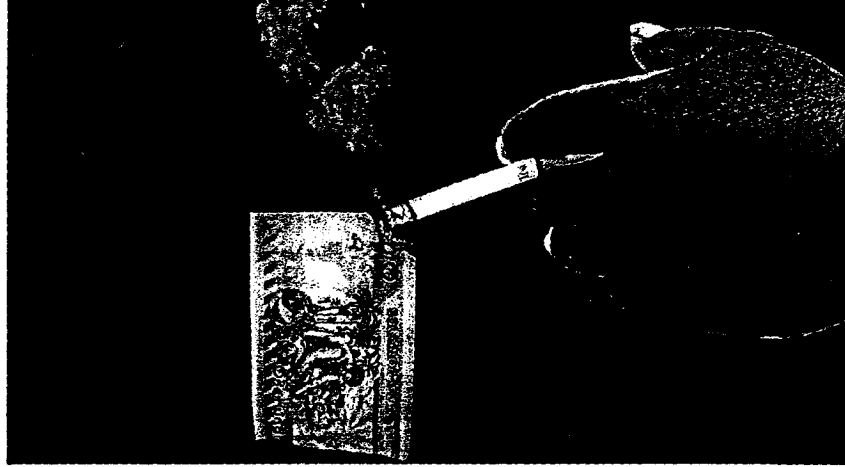
(a) The warning message in English is:

SMOKING BURNS AWAY YOUR FAMILY'S MONEY

(b) The warning message in Solomon Islands Pidgin is:

SMOKA SAVE BONEM SPOELEM SELENI BLO FAMALI

(c) The graphic for the front outer surface is:



(d) The information on constituents is:

Cigarettes contain cadmium, a very poisonous metal used in batteries.

5. **Smoking causes mouth cancer**

(a) The warning message in English is:

SMOKING CAUSES MOUTH CANCER

(b) The warning message in Solomon Islands Pidgin is:

SMOKA SAVE KOSIM KANSA LO MAUT

(c) The graphic for the front outer surface is:



(d) The information on constituents is:

Tobacco smoke contains a poisonous mix of chemicals. These poisons can cause disease and early death for others who breathe in your smoke, including your children.

SCHEDULE 2

(regulations 2, 3, 4, 5, 9 and 10)

Warning messages, corresponding graphic health warnings, corresponding explanatory messages and corresponding information on constituents – retail packaging of cigarettes and loose or pipe tobacco (second set of health warnings)

1. Smoking causes lung cancer

(a) The warning message in English is:

SMOKING CAUSES LUNG CANCER

(b) The warning message in Solomon Islands Pidgin is:

SMOKA SAVE KOSIM LANG KANSA

(c) The graphic for the front outer surface is:



(d) The information on constituents is:

The poisonous chemicals in tobacco smoke can go everywhere your blood flows, causing harm all over your body.

2. **Smoking is highly addictive**

(a) The warning message in English is:

SMOKING IS HIGHLY ADDICTIVE

(b) The warning message in Solomon Islands Pidgin is:

SMOKA SAVE HUKIM IU FOR LAEK SMOK OLOWE

(c) The graphic for the front outer surface is:



(d) The information on constituents is:

Inhaling even small amounts of the toxic chemicals in tobacco smoke can trigger sudden heart attack and stroke.

3. Tobacco smoke is poisonous

(a) The warning message in English is:

TOBACCO SMOKE IS POISONOUS

(b) The warning message in Solomon Islands Pidgin is:

TOBAKO SMOK HEMI GAREM POISIN

(c) The graphic for the front outer surface is:



(d) The information on constituents is:

There are no health benefits in smoking products that taste lighter, milder or less harsh.

4. **Smoking harms your unborn baby**

(a) The warning message in English is:

SMOKING HARMS YOUR UNBORN BABY

(b) The warning message in Solomon Islands Pidgin is:

SMOKA SAVE SPOELEM BEBI BLO IU TAEM IU BABULE

(c) The graphic for the front outer surface is:



(d) The information on constituents is:

The chemicals in tobacco smoke build up to high levels in your body over time. This increases your risk of death and disease the more you smoke.

5. Smoking causes blindness

(a) The warning message in English is:

SMOKING CAUSES BLINDNESS

(b) The warning message in Solomon Islands Pidgin is:

SMOKA SAVE MEKEM AE BLO MAN BLAEN

(c) The graphic for the front outer surface is:



(d) The information on constituents is:

Smoking exposes you to at least 70 cancer-causing chemicals.

SCHEDULE 3
(regulations 3, 4, 5 and 9)
Labeling Specifications
PART 1 - CIGARETTES

1. Cigarette Pack

Item	Object	Content	Specifications
1	Front outer surface	a) Warning message in Solomon Islands Pidgin b) Corresponding graphic health warning	The warning messages in Solomon Islands Pidgin and corresponding graphic health warning shall – (a) cover 70 percent of the total area of the front face; and (b) be positioned parallel to, and as close as possible to, the top edge of the front face; and (c) extend as close as possible to the side edges of the front face.
2.	Back outer surface	a) Warning message in English	The warning message in English shall— (a) cover 30 percent of the total area of the back face; and (b) be positioned parallel to, and as close as possible to, the top edge of the back face; and (c) extend as close as possible to the side edges of the back face.
3	Side outer surface	Information on constituents	The information message shall cover the total area of the side of the pack, except the area that forms part of the flip-top where relevant.
4	Front layout		Front layout 1, specified in Schedule 4, Part 1.
5	Back layout		Back layout 1, specified in Schedule 4, Part 2.

2 Vertical Carton – semi-transparent and non-transparent

Item	Object	Content	Specifications
1	Front outer surface	a) Warning message in Solomon Islands Pidgin b) Corresponding graphic health warning	The warning message in Solomon Islands Pidgin and corresponding graphic health warning shall – (a) cover 70 percent of the total area of the front face; and (b) be positioned parallel to, and as close as possible to, the top edge of the front face; and (c) extend as close as possible to the side edges of the front face
2	Back outer surface	a) Warning message in English	The warning message in English shall – (a) if the back face is partially obscured by a seal – (i) cover as much of the remainder of the back face as practicable; and (ii) in any case cover at least 30 percent of the remaining area of the back face; and (b) in any other case, cover at least 30 percent of the total area of the back face; and (c) be positioned parallel to, as close as possible to, the long edge of the back face; and (d) extend as close as possible to the side edges of the back face.
3	Side outer surface	Information on constituents	The information message shall cover 25 percent of the total area of one side of the carton.

4	Front layout	Front layout 1, specified in Schedule 4, Part 1.
5	Back layout	Back layout 1, specified in Schedule 4, Part 2.

3 Horizontal carton – semi-transparent and non-transparent

Item	Object	Content	Specifications
1	Front outer surface	a) Warning message in Solomon Islands Pidgin b) Corresponding graphic health warning	The warning message in Solomon Islands Pidgin and corresponding graphic health warning shall– (a) cover 70 percent of the total area of the front face; and (b) be positioned parallel to, and as close as possible to, the top edge of the front face; and (c) be positioned as close as possible to the left-hand edge of the front face.
2	Back outer surface	a) Warning message in English	The warning message in English shall– a) if the back face is partially obscured by a seal – (i) cover as much of the remainder of the back face as practicable; and (ii) in any case cover at least 30 percent of remaining area of the back face; and

			(b) in any other case, cover at least 30 percent of the total area of the back face; and (c) be positioned parallel to, and as close as possible to, the longest edge of the back face; and (d) extend as close as possible to the side edges of the back face.
3	Side outer surface	Information on constituents	The information message shall cover 25 percent of the total area of one side of the carton.
4	Front layout		Front layout 2, specified in Schedule 4, Part 1.
5	Back layout		Back layout 2, specified in Schedule 4, Part 2.

PART 2 – LOOSE OR PIPE TOBACCO

Item	Object	Content	Specifications
1	Pouch Front outer surface (the largest face of the pouch that is not overlapped by the flap of the pouch)	a) Warning message in Solomon Islands Pidgin. b) Corresponding graphic health warning.	For a front face with portrait orientation, the warning message in Solomon Islands Pidgin and corresponding graphic health warning shall— (a) cover 70 percent of the total area of the front face; and (b) be positioned parallel to, and as close as possible to, the top edge of the front face; and (c) extend as close as possible to the side edges of the front face. For a front face with landscape orientation, the warning message in Solomon Islands Pidgin and corresponding graphic health warning shall — (a) cover at least 70 percent of the total area of the front face; and (b) be positioned parallel to, and as close as possible to, the top and left-hand sides of the front face.

2	Back outer surface (the face, comprising the flap, opposite to the front face)	a) Warning message in English	<p>The warning message in English shall –</p> <p>(a) cover 30 percent of the total area of the back face; and (b) be positioned parallel to, and as close as possible to, the top edge of the back face; and (c) extend as close as possible to the side edges of the back face.</p>
3	Side outer surface	Information on constituents	<p>The information message shall be printed within a rectangle measuring at least 80mm x 25mm that is positioned–</p> <p>(a) in the centre of the inside of the pouch, under the flap, as close as possible to the top edge of the sealed inner pouch; or (b) in the centre of the inside surface of the flap that folds over the back face.</p>
4	Front layout		<p>For portrait orientation - front layout 1, specified in Schedule 4, Part 1.</p> <p>For landscape orientation- front layout 2, specified in Schedule 4, Part 1.</p>
5	Back layout		<p>Back layout 2, specified in Schedule 4, Part 2.</p>

PART 3 – CIGARS

1 Package with hinged lid

Item	Object	Content	Specifications
1	Front outer Surface (outer surface of lid)	a) Warning message in Solomon Islands Pidgin. b) Corresponding graphic health warning.	The warning message in Solomon Islands Pidgin and corresponding graphic health warning shall – (a) cover 70 percent of the total area of the front face; and (b) be positioned parallel to, and as close as possible to, the top edge of the front face; and (c) extend as close as possible to the side edges of the front face
2	Back outer surface (outer face of base)	a) Warning message in English	The warning message in English shall – (a) cover 30 percent of the total area of the back face; and (b) be positioned parallel to, and as close as possible to, the top edge of the back face; and (c) extend as close as possible to the side edges of the back face.
3	Side outer surface	Information on constituents	The information message shall cover the total area of the side of the pack.
4	Front layout		Front layout 1, specified in Schedule 4, Part 1.
5	Back layout		Back layout 1, specified in Schedule 4, Part 2.

2 Flip-top pack

Item	Object	Content	Specifications
1	Front outer surface	a) Warning message in Solomon Islands Pidgin. b) Corresponding graphic health warning.	The warning message in Solomon Islands Pidgin and corresponding graphic health warning shall – (a) cover 70 percent of the total area of the front face; and (b) be positioned parallel to, and as close as possible to, the top edge of the front face; and (c) extend as close as possible to the side edges of the front face.
2	Back outer surface	a) Warning message in English	The warning message in English, shall – (a) cover 30 percent of the total area of the back face; and (b) be positioned parallel to, and as close as possible to, the top edge of the back face; and (c) extend as close as possible to the side edges of the back face.
3	Side outer surface	Information on constituents	The information message shall cover the total area of the side of the pack, except the area that forms part of the flip-top.
4	Front layout		Front layout 1, specified in Schedule 4, Part 1.
5	Back layout		Back layout 1, specified in Schedule 4, Part 2.

3 Soft pack

Item	Object	Content	Specifications
1	Front outer surface	a) Warning message in Solomon Islands Pidgin. b) Corresponding graphic health warning.	The warning message in Solomon Islands Pidgin and corresponding graphic health warning shall– (a) cover 70 percent of the total area of the front face; and (b) be positioned parallel to, and as close as possible to, the top edge of the front face; and (c) extend as close as possible to the side edges of the front face.

2	Back outer surface	a) Warning message in English	The warning message in English shall— (a) cover 30 percent of the total area of the back face; and (b) be positioned parallel to, and as close as possible to, the top edge of the back face; and (c) extend as close as possible to the side edges of the back face.
3	Side outer surface	Information on constituents	The information message shall cover the total area of one side of the pack.
4	Front layout		Front layout 1, specified in Schedule 4, Part 1.
5	Back layout		Back layout 1, specified in Schedule 4, Part 2.

4 Rectangular or square shaped pack or tin

Item	Object	Content	Specifications
1	Front outer surface	a) Warning message in Solomon Islands Pidgin. b) Corresponding graphic health warning.	The warning message in Solomon Islands Pidgin and the corresponding graphic health warning shall cover 70 percent of the total area of the front face.
2	Back outer surface	a) Warning message in English	The warning message in English shall cover 30 percent of the total area of the back face.
3	Front layout		Front layout 1, specified in Schedule 4, Part 1.
4	Back layout		Back layout 1, specified in Schedule 4, Part 2.

SCHEDULE 4

(regulations 3, 4, 5, 6 and 9)

Layouts

PART 1 – FRONT LAYOUTS

1. Cigarette packages and vertical packages generally

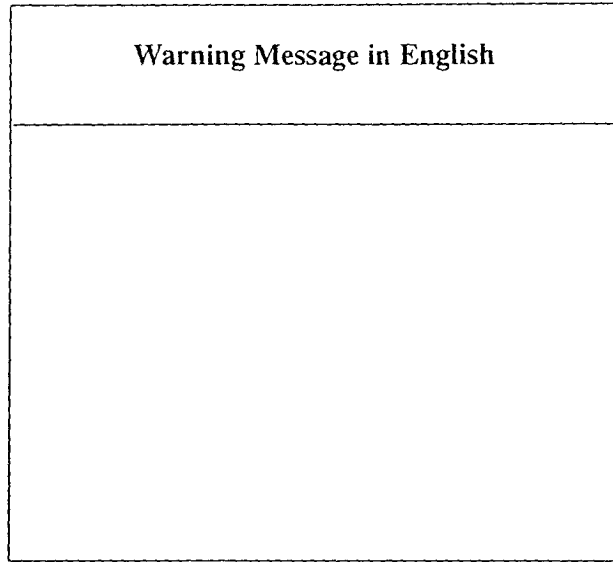
Warning Message in Solomon Islands Pidgin
Graphic Health Warning

2 Horizontal packages generally

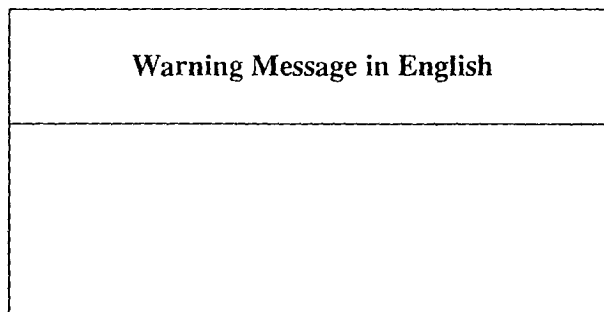
Graphic Health Warning	Warning Message in Solomon Islands Pidgin

PART 2 – BACK LAYOUTS

1 Cigarette packages and vertical packages generally



2 Horizontal packages generally



MADE AT HONIARA this eighteenth day of December, 2013.

HON. CHARLES SIGOTO
Minister for Health and Medical Services

TOBACCO CONTROL ACT 2010
(No. 2 of 2010)

TOBACCO CONTROL (TESTING LABORATORY)
ORDER 2013

IN exercise of the powers conferred upon me by section 41(1)(q) of the Act, I make this order –

Citation and
commence-
ment

1. This Order may be cited as the *Tobacco Control Regulations Testing Laboratory Order 2013* and commences on 18 December 2013.

ting
laboratory
nominated

2. (1) For the purposes of tests required by sections 16 and 17 of the *Tobacco Control Act 2010* and Part 5 of the *Tobacco Control Regulations 2013*, the following laboratory must be used:

HEALTH SCIENCES AUTHORITY, SINGAPORE

(2) No test results from any other laboratory will be accepted.

DATED AT HONIARA this eighteenth day of December, 2013.

HON. CHARLES SIGOTO
Minister for Health and Medical Services

Honiara, Solomon Islands
Printed under the authority of the
Solomon Islands Government
Printed by Pacific Printers Limited.
